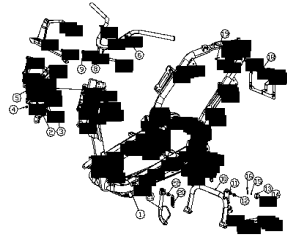


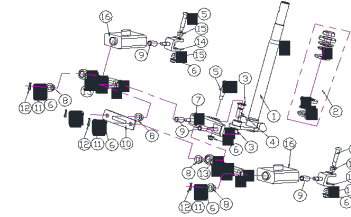
Frison 3R / 3RS+ - Pièces détachées

Direction



N°				Noms des pièces	Composants des pièces 3R	Composants des pièces 3RS+	Noms des composants
1				Frame Set (Ref: D501-2801000-BK300)	D501-2801000-BK310	D501-2801000-BK300	Comp. cadre
2				Windshield Set (Ref: D501-2815000-BK300)	D501-2815000-BK300	D501-2815000-BK300	Support de pare-brise Comp.
3			Q186-0616-F31-8.8		Q186-0616-F31-8.8	Boulon	
4			Q330-06-F31-8		Q330-06-F31-8	Écrou	
5				Q186-0645-F31-8.8	Q186-0645-F31-8.8	Boulon	
6				D501-2811000-BK300	D501-2811000-BK300	Comp. guidon	
7				Q185-1045-F31-10.9	Q185-1045-F31-10.9	Boulon	
8				D501-2812000-F3200	D501-2812000-F3200	Brousse	
9				Q330B-10-F31-10	Q330B-10-F31-10	Écrou	
10				Main Stand Set 2742000-BK300 (Ref: D501-2742000-BK300)	D501-2742000-BK300	D501-2742000-BK300	Stand principal (Nouvelle version - Après le 22 septembre)
10-1					D501-2742001-BK300	D501-2742001-BK300	Support principal (Ancienne version - Avant août 2020)
11					D501-2747000-F3200	D501-2747000-F3200	Brousse
12					Q185-1025-F31-8.8	Q185-1025-F31-8.8	Boulon
13					D501-2746000-00	D501-2746000-00	Cousin, Support principal
14					Q510-0625-F31	Q510-0625-F31	Épingle
15					Q402-06-F31	Q402-06-F31	Rondelle
16					Q500-0212-F30	Q500-0212-F30	Broche De Fractionnement
17					D501-2744000-F3100	D501-2744000-F3100	Printemps
18					D501-2813000-BK300	D501-2813000-BK300	Contrôleur de support
19				Q2188-0620-F31-8.8	Q2188-0620-F31-8.8	Visser	
20				D501-2745000-F3100	D501-2745000-F3100	Printemps	
21				D501-2743000-BK300	D501-2743000-BK300	Étage latéral	
22				D501-2748000-F3100	D501-2748000-F3100	Boulon	

Direction



N°				Noms des pièces	Composants des pièces 3R	Composants des pièces 3RS+	Noms des composants
1				Steering Column Assembly Set 3401000-BK300 (Ref: D501-3401000-BK300)	D501-3401000-BK310	D501-3401001-BK300	Colonne de direction (ensemble de fourche avant) Nouvelle version - Après 01Jan2023, D1-5000W SEULEMENT
1-1					D501-3401000-BK300	D501-3401000-BK300	Assemblage de colonne de direction (assemblage de fourche avant) Ancienne version - Avant 01Jan2023
2				Steering Pull Rod Set 2023年之前 Before year 2023 (旧版本 Old version... Ref: D501-2972000-F3201) 2023年之后 After year 2023 (新版本 New version... Ref: D501-2972000-F3200)	D501-3419000-F3400	D501-3419000-F3400	Ensemble de bol en acier
3					D501-2967000-F2900	D501-2967000-F2900	Traverse De Fuseau
4					D501-2968000-F2900	D501-2968000-F2900	Traverse
5					FB218C-1051-F31-8.8	FB218C-1051-F31-8.8	Bras De Direction Latéral (Boulon)
6					Q330-08-F31-8	Q330-08-F31-8	Écrou À Verrouillage Automatique
7					D501-2969000-F3210	D501-2969000-F3200	Bras De Direction Central
8					D501-2967000-F2920	D501-2967000-F2910	Traverse De Fuseau
9					D501-2968000-F2910	D501-2968000-F2910	Traverse
10					D501-2970000-F3200	D501-2970000-F3200	Assiette
11					D501-2976000-F3200	D501-2976000-F3200	Protection de la couverture
12				Q500-0212-F30	Q500-0212-F30	Broche De Fractionnement	
13				D501-2972000-F3210	D501-2972000-F3200	Tige De Direction	
14				D501-2971000-F3210	D501-2971000-F3200	Bras De Direction Latéral	
15				D501-2975000-F3200	D501-2975000-F3200	Douille De Bride	
16				D501-2983000-BK300	D501-2983000-BK300	Couvercle En Caoutchouc Pour Poussière	

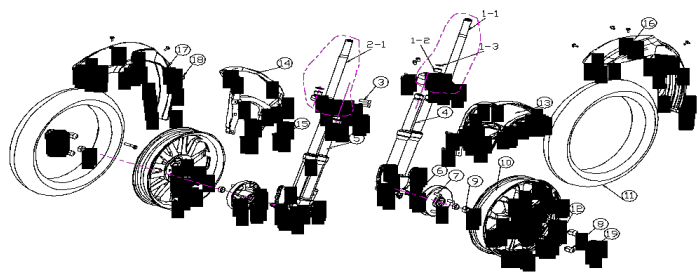
Suspensions avant

N°				Noms des pièces	Composants des pièces 3R	Composants des pièces 3RS+	Noms des composants
1-1				The Mutual Leaning System (MLS) Set (Ref: D501-2978000-SL000)	D501-2978000-SL010	D501-2978001-SL000	« The Mutual Leaning System (MLS) »
1-1.1					D501-2978001-SL010 MLS A (Small)	D501-2978000-SL000	Nouvelle version - Après 01Jan2023, D1-5000W uniquement »
					D501-2978002-SL010 MLS B (Large)		« The Mutual Leaning System (MLS) »
1-2					ZC6201RS	ZC6202RS	Ancienne version - Avant 01Jan2023 »
1-3					Q430-28-F30	Q430-35-F30	
1-5					Q2188-0805-F31-8.8		Pilier
2					FBQ185C-1280-F31-8.8	FBQ185C-1580-F31-8.8	Trou De Plier À Ressort
3					Q330B-10-F31-10	Q330B-10-F31-10	Visser
4					FBQ185C-1227-F31-8.8	FBQ185C-1527-F31-8.8	Personnalisé par boulon
5					D501-2977000-BK300	D501-2977000-BK300	Écrou À Verrouillage Automatique
6				Q214-0515-F31-8.8	Q214-0515-F31-8.8	Personnalisé par boulon	

7					Side-Headtube Set (Ref: D501-2979000-BK310)	D501-2979000-BK310	D501-2979001-BK300	Caoutchouc Limité
7-1							D501-2979000-BK300	Visser
8						D501-3419000-F3400	D501-3419000-F3400	Side-Headtube - Nouvelle version - Après 01Jan2023
9							D501-2981000-F3200	Side-Headtube - Ancienne version - Avant 01Jan2023
10						D501-2981000-F3200	D501-2981000-F3200	Ensemble de bol en acier
11						D501-2982000-F3200	D501-2982000-F3200	Traverse
12						Q184-0820-F31-8.8	Q184-0820-F31-8.8	Plaque LH
13						Q403-08-F31	Q403-08-F31	Plaque RH
14						D501-2966000-F3200	D501-2966000-F3200	Boulon
15						FB218C-1045-F31-8.8	FB218C-1045-F31-8.8	Rondelle A Ressort
16						D501-2967000-F2900	D501-2967000-F2900	D501-2967000-F2900
17						D501-2968000-F2900	D501-2968000-F2900	Tige De Traction
18						Q330-08-F31-8	Q330-08-F31-8	Personnalisé par boulon Traverse De Fuseau

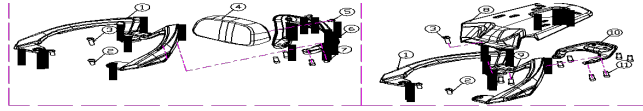
Fourches avant

Traverse
Écrou À Verrouillage Automatique



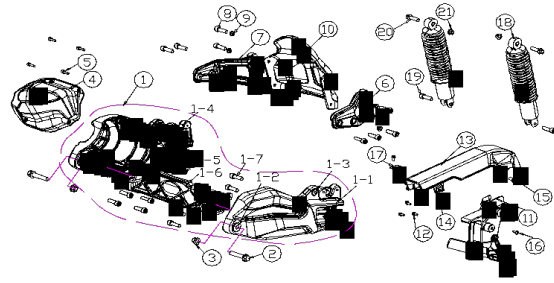
N°					Noms des pièces	Composants des pièces 3R	Composants des pièces 3RS+	Noms des composants
1-1					Front Fork Assy Set (Ref: D501-2973000-SL000 or D501-2974000-SL000)	D501-2973000-SL010	D501-2973001-SL000	Front Fork Assy LH New version - After 30Sept2022
1-1.1				D501-2973000-SL000			Front Fork Assy LH Old version - Before 30Sept2022	
2-1				D501-2974001-SL000			Front Fork Assy RH New version - After 30Sept2022	
2.1.1				D501-2974000-SL000			Front Fork Assy RH Old version - Before 30Sept2022	
1-2				FRZC261215			Bearing	
1-3				Q430-26-F30	Spring Plier-Hole			
3				Q2188-0830-F31-8.8	Screw			
4					D501-2905100-SL010	D501-2905100-SL000	Front Shock Absorber LH New version - After 30Sept2022	
4-1				D501-2905110-SL000		Front Shock Absorber LH Old version - Before 30Sept2022		
5					D501-2905200-SL010	D501-2905200-SL000	Front Shock Absorber RH New version - After 30Sept2022	
5-1				D501-2905210-SL000		Front Shock Absorber RH Old version - Before 30Sept2022		
6					D501-3012000-F3200	D501-3012000-F3200	Bushing	
7					D501-3112100-SL000	D501-3112100-SL000	Wheel Hub Assy.	
8					Q308-10-F13-8	Q308-10-F13-8	Wheel Nut	
9					Q326-16-F30-10	Q326-16-F30-10	Nut	
10					D501-3103000-BK300	D501-3103000-BK300	Front Wheel	
12					D501-4224000-00	D501-4224000-00	Valve	
11					D501-3106000-10	D501-3106000-00	Front Tire	
13					D501-19232-SL010	D501-2817000-SL000	Front Fender Bracket LH (Small tire small connector)	
				D501-2817001-SL000		Front Fender Bracket LH (Large tire small connector)		
				D501-2817002-SL000		Front Fender Bracket LH (Large tire large connector)		
14					D501-19233-SL010	D501-2818000-SL000	Front Fender Bracket RH (small tire small connector)	
				D501-2818001-SL000		Front Fender Bracket RH (large tire small connector)		
				D501-2818002-SL000		Front Fender Bracket RH (large tire large connector)		
15					Q2188-0620-F31-8.8	Q2188-0620-F31-8.8	Screw	
16					D501-5533000-BK300	D501-5533001-BK300	Front Fender LH New version - After 30Sept2022	
16-1				D501-5533000-BK300		Front Fender LH Old version - Before 30Sept2022		
17					D501-5534000-BK300	D501-5534001-BK300	Front Fender RH New version - After 30Sept2022	
17-1				D501-5534000-BK300		Front Fender RH Old version - Before 30Sept2022		
18					Q2181-0616-F31-8.8	Q2181-0616-F31-8.8	Bolt	
19					D501-8801000-00000	D501-8801000-00000	Cover Front Wheel Axle	

Poignée arrière / Support Top Case / Dossieret



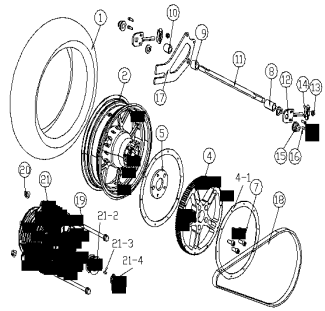
N°				Noms des pièces	Composants des pièces 3R	Composants des pièces 3RS+	Noms des composants
1					D501-7215000-SL000	D501-7215000-SL000	Rear Handrailing
2					FBQ218C-0820-F13-8.8	FBQ218C-0820-F13-8.8	Bolt-Customized
3					FBQ218C-0835-F13-8.8	FBQ218C-0835-F13-8.8	Bolt-Customized
4					D501-7213000-BK300	D501-7213000-BK300	Backrest
5					FBQ218C-0620-F13-8.8	FBQ218C-0620-F13-8.8	Bolt-Customized
6					D501-7214000-SL000	D501-7214000-SL000	Backrest Bracket
7					Q2188-0825-F32-8.8	Q2188-0825-F32-8.8	Screw
8					D501-7216000-SL000	D501-7216000-SL000	Rear Shelf
9					Q2188-0820-F32-8.8	Q2188-0820-F32-8.8	Screw
10					D501-7217000-SL000	D501-7217000-SL000	Rear Shelf Reinforce Bracket
11					Q2188-0816-F32-8.8	Q2188-0816-F32-8.8	Screw

Bras oscillant



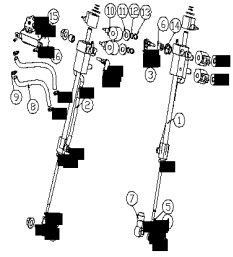
N°				Noms des pièces	Composants des pièces 3R	Composants des pièces 3RS+	Noms des composants
1					D501-2984000-SL000	D501-2984000-SL000	Swing Arm Assy.
1-1					D501-2984001-SL000	D501-2984001-SL000	Swing Arm L Side
1-2					D501-2984004-BK300	D501-2984004-BK300	Front Cushion Bushing
1-3					D501-2984005-BK300	D501-2984005-BK300	Rear Cushion Bushing
1-4					D501-2984002-SL000	D501-2984002-SL000	Swing Arm R Side
1-5					D501-2984006-BK300	D501-2984006-BK300	Bolt
1-6					D501-2984003-BK300	D501-2984003-BK300	Swing Arm Center Bracket
1-7					Q2188-0825-F31-8.8	Q2188-0825-F31-8.8	Screw
2					Q185-1255-F31-8.8	Q185-1255-F31-8.8	Bolt
3					Q326-12-F30-8	Q326-12-F30-8	Nut
4					D501-5538000-BK300	D501-5538000-BK300	Cover Swing Arm LH
5					Q2188-0620-F31-8.8	Q2188-0620-F31-8.8	Screw
6					D501-2821000-BK300	D501-2821000-BK300	Bracket Rear Fender LH
7					D501-2822000-BK300	D501-2822000-BK300	Bracket Rear Fender RH
8					Q2188-0825-F31-8.8	Q2188-0825-F31-8.8	Screw
9					Q330-08-F31-8	Q330-08-F31-8	Nut
10					D501-5535000-BK300	D501-5535000-BK300	Rear Fender
11					D501-5536000-BK300	D501-5536000-BK300	Chain Cover Down
12					Q186-0616-F31-8.8	Q186-0616-F31-8.8	Bolt
13					D501-5537000-BK300	D501-5537000-BK300	Chain Cover
14					Q397-42-F31-8	Q397-42-F31-8	Clip Nut
15					Q184-0820-F31-8.8	Q184-0820-F31-8.8	Bolt
16					Q273-4216-F31-8.8	Q273-4216-F31-8.8	Screw
17					D501-2815000-BK300	D501-2815000-BK300	Front Bracket Chain Cover
18					D501-2915000-BK300	D501-2915000-BK300	Rear Shock Absorber
19					Q184-0835-F31-10.9	Q184-0835-F31-10.9	Bolt
20					Q184-0840-F31-10.9	Q184-0840-F31-10.9	Bolt
20-2					Q185-1045-F31-10.9	Q185-1045-F31-10.9	Bolt
21					Q3308-10-F31-10	Q3308-10-F31-10	Nut

Moteur



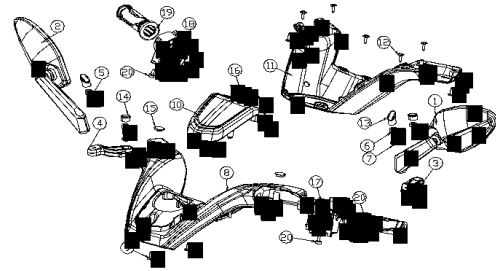
N°				Noms des pièces	Composants des pièces 3R	Composants des pièces 3RS+	Noms des composants
1					D501-3107000-00	D501-3107000-00	Rear Tire
2					D501-3104000-BK300	D501-3104000-BK300	Rear Wheel
3					D501-4224000-00	D501-4224000-00	Valve
4					D501-2147101-00	D501-2147101-00	Chain Sprocket
5					D501-3112200-SL000	D501-3112200-SL000	Washer
6					Q403-10-F31	Q403-10-F31	Spring Washer
7					Q2188-1040-F31-8.8	Q2188-1040-F31-8.8	Screw
8					D501-3305000-F3200	D501-3305000-F3200	Bushing Rear Wheel LH
9					D501-3306000-F3200	D501-3306000-F3200	Bushing Rear Wheel RH
10					D501-3502105-BK300	D501-3502105-BK300	Bushing Rear Brake Bracket
11					D501-3304000-F3100	D501-3304000-F3100	Rear Wheel Axle
12					D501-2147103-F3200	D501-2147103-F3200	Chain Adjuster
13					Q3418-10-F31-8	Q3418-10-F31-8	Nut
14					D501-2147104-F3200	D501-2147104-F3200	Limit Bracket Chain Adjuster
15					D501-3307000-F3200	D501-3307000-F3200	Nut
16					Q2188-0616-F32-8.8	Q2188-0616-F32-8.8	Screw
17					D501-3502104-BK300	D501-3502104-BK300	Brake Bracket
18					D501-2147102-00	D501-2147102-00	Belt
19					Q185-12190-F31-10.9	Q185-12190-F31-10.9	Bolt
20					Q326-12-F30-8	Q326-12-F30-8	Nut
21					D501-2103110	D501-2103110	Motor
21-2					D501-2103102-00	D501-2103102-00	Chain Sprocket Front
21-3					G550-0516	G550-0516	Woodruff Key
21-4					Q326-16-F30-10	Q326-16-F30-10	Nut
					D501-042023-Frison	D501-042023-Frison	Roulement arrière

Système d'équilibrage avant



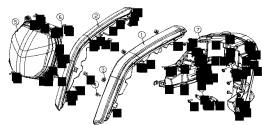
N°				Noms des pièces	Composants des pièces 3R	Composants des pièces 3RS+	Noms des composants
1						D501-3507100-00	Parking System LH
2						D501-3507200-00	Parking System RH
10						D501-3636140	Electromagnetic Valve
3						D501-3507400-00	Joint Bearing Up
4						D501-3507500-00	Joint Bearing Down
5						Q3408-10-F31-8	Nut
6						D501-3507701-8K300	Bush Rubber
7						D501-3507702-8K300	Dust Rubber Cover
11						Q402-16-F32	Washer
12						OQ-17*1	O Ring
13						Q431-17-F32	Spring Plier-Axle
14						Q3308-10-F31-10	Nut
8						D501-3561300-00	Oil Tube
9						Q67316-TY00-00	Clip
15						D501-3507300-00	Oil Tank
16						Q186-0616-F31-8.8	Bolt

Guidon



N°				Noms des pièces	Composants des pièces 3R	Composants des pièces 3RS+	Noms des composants
1				Mirror LH Set	D501-8202100-00	D501-8202100-00	Mirror LH
3				(Ref: D501-8202100-00)	D501-8241000-8K300	D501-8241000-8K300	Mirror Link LH
2				Mirror RH Set	D501-8202200-00	D501-8202200-00	Mirror RH
4				(Ref: D501-8202200-00)	D501-8242000-8K300	D501-8242000-8K300	Mirror Link RH
5					Q2188-0820-F31-8.8	Q2188-0820-F31-8.8	Screw
6					Q2188-0820LH-F31-8.8	Q2188-0820LH-F31-8.8	Screw
7					Q403-08-F31	Q403-08-F31	Spring Washer
8					D501-5500143-8K300	D501-5500143-8K300	Cover Up
9					Q273-4212-F31-8.8	Q273-4212-F31-8.8	Screw
10					D501-5500144-8K300	D501-5500144-8K300	Cover2 Up
11					D501-5500145-8K300	D501-5500145-8K300	Cover Down
12					Q273-4216-F31-8.8	Q273-4216-F31-8.8	Screw
13					D501-5532005-8K300	D501-5532005-8K300	Rubber Plug
14					D501-5532006-8K300	D501-5532006-8K300	Rubber Plug 2
15					D501-5532007-8K300	D501-5532007-8K300	Cover Plug
16					D501-8802000-00000	D501-8802000-00000	Logo Cover
17					D501-3774170	D501-3774170	Switch Lh New version - After 01Jan2023
17-1					D501-3774110	D501-3774110	Switch Lh Old version - Before 01Jan2023
18					D501-3774180	D501-3774180	Switch Rh New version - After 01Jan2023
18-1					D501-3774120	D501-3774120	Switch Rh Old version - Before 01Jan2023
19					D501-8704000-00	D501-8704000-00	Throttle
20					D501-8703000-00	D501-8703000-00	Handle Grip
21					Q214-0515-F31-8.8	Q214-0515-F31-8.8	Screw

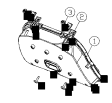
Éclairage



N°				Noms des pièces	Composants des pièces 3R	Composants des pièces 3RS+	Noms des composants
1					D501-4111110	D501-4111110	Trun Light LF
2					D501-4111120	D501-4111120	Trun Light RF
3					Q397-42-F31-8	Q397-42-F31-8	Spring Nut
4					Q273-4216-F31-8.8	Q273-4216-F31-8.8	Screw

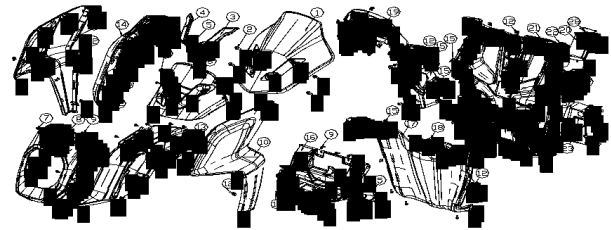
5					D501-4121110	D501-4121110	Headlight
6					Q273-4212-F31-8.8	Q273-4212-F31-8.8	Screw
7					D501-4133110	D501-4133110	Taillight
8					D501-4108110	D501-4108110	License Light

Compteur



N°				Noms des pièces	Composants des pièces 3R	Composants des pièces 3RS+	Noms des composants
1				Speedometer Set (Ref: D501-3820110-A1)	D501-3820110-A1	D501-3820110-A1	Speedometer New version - After Juin2021
1-1						D501-3820110-A3	Speedometer Old version - Before Juin2021
2					Q397-42-F31-8	Q397-42-F31-8	Spring Nut
3					Q273-4212-F31-8.8	Q273-4212-F31-8.8	Screw

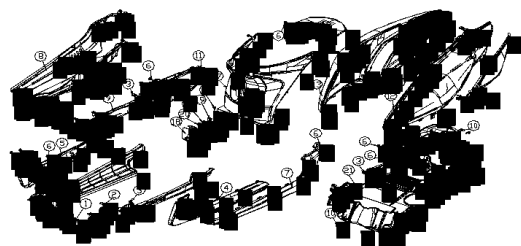
Plasturgie avant



N°				Noms des pièces	Composants des pièces 3R	Composants des pièces 3RS+	Noms des composants
1					D501-5500101-00000	D501-5500101-00000	Windshield
2					Q184-0820-F31-8.8	Q184-0820-F31-8.8	Bolt
3					D501-5500103-BK300	D501-5500103-BK300	Decorated Cover LH
4					D501-5500104-BK300	D501-5500104-BK300	Decorated Cover LH
5					Q692-08	Q692-08	Plastiv Pin Screw
6					D501-5500105-BK300	D501-5500105-BK300	Windshield Nimmer Cover
7					Q273-4212-F31-8.8	Q273-4212-F31-8.8	Screw
8					D501-5500107-BK500	D501-5500107-BK500	Headlight Cover
9					Q186-0616-F31-8.8	Q186-0616-F31-8.8	Bolt
10					D501-5500111-BK500	D501-5500111-BK500	Front Side Cover LH
11					D501-5500112-BK500	D501-5500112-BK500	Front Side Cover RH
12					Q397-42-F31-8	Q397-42-F31-8	Spring Nut
13					D501-5500113-BK500	D501-5500113-BK500	Decorated Cover Middle LH
14					D501-5500114-BK500	D501-5500114-BK500	Decorated Cover Middle RH
15					Q273-4216-F31-8.8	Q273-4216-F31-8.8	Screw
16					D501-5500108-BK300	D501-5500108-BK300	Headlight Inner Cover
17					D501-5500116-BK300	D501-5500116-BK300	Front Inner Cover
18					Q2181-0616-F31-8.8	Q2181-0616-F31-8.8	Bolt
19					D501-5500106-BK300	D501-5500106-BK300	Speedometer Cover
20					D501-5542000-BK300	D501-5542000-BK300	Cup Holder
21					D501-5500115-BK300	D501-5500115-BK300	Front Toolbox
22					D501-8705000-00	D501-8705000-00	Clip Plastic
23					D501-5500151-BK300	D501-5500151-BK300	Bluetooth Horn Cover LH
24					D501-5500152-BK300	D501-5500152-BK300	Bluetooth Horn Cover RH
25					D501-5500146-BK300	D501-5500146-BK300	Hook Base
26					D501-5500147-BK300	D501-5500147-BK300	Hook
27					Q2188-0620-F31-8.8	Q2188-0620-F31-8.8	Bolt
28					D501-5532003-BK300	D501-5532003-BK300	Cup Holder Rubber

序号No.				Components and Parts No.	3000W	5000W	Components and Parts Name
10				Red		D501-5500111-RD000	Front Side Cover LH
11				Red		D501-5500112-RD000	Front Side Cover RH
				Black	D501-5500111-BK000		Front Side Cover LH
				Black	D501-5500112-BK000		Front Side Cover RH
10				White	D501-5500111-WT000	D501-5500111-WT000	Front Side Cover LH
11				White	D501-5500112-WT000	D501-5500112-WT000	Front Side Cover RH
10				Blue	D501-5500111-BU000	D501-5500111-BU000	Front Side Cover LH
11				Blue	D501-5500112-BU000	D501-5500112-BU000	Front Side Cover RH
10				Grey	D501-5500111-GY000	D501-5500111-GY000	Front Side Cover LH
11				Grey	D501-5500112-GY000	D501-5500112-GY000	Front Side Cover RH
13				Red		D501-5500113-RD000	Decorated Cover Middle LH
14				Red		D501-5500114-RD000	Decorated Cover Middle RH
				Black	D501-5500113-BK000		Decorated Cover Middle LH
				Black	D501-5500114-BK000		Decorated Cover Middle RH
13				White	D501-5500113-WT000	D501-5500113-WT000	Decorated Cover Middle LH
14				White	D501-5500114-WT000	D501-5500114-WT000	Decorated Cover Middle RH
13				Blue	D501-5500113-BU000	D501-5500113-BU000	Decorated Cover Middle LH
14				Blue	D501-5500114-BU000	D501-5500114-BU000	Decorated Cover Middle RH
13				Grey	D501-5500113-GY000	D501-5500113-GY000	Decorated Cover Middle LH
14				Grey	D501-5500114-GY000	D501-5500114-GY000	Decorated Cover Middle RH

Plasturgie arrière

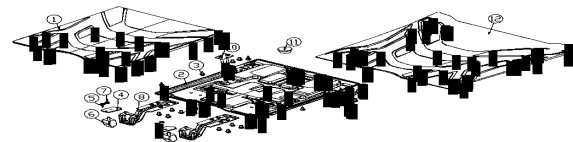


N°				Noms des pièces	Composants des pièces 3R	Composants des pièces 3RS+	Noms des composants
1					D501-5500117-BK300	D501-5500117-BK300	Bottom Cover

2					Q2181-0616-F31-8.8	Q2181-0616-F31-8.8	Bolt
3					Q397-42-F31-8	Q397-42-F31-8	Spring Nut
4					D501-5500121-BK500	D501-5500121-BK500	Middle Side Cover Up LH
5					D501-5500122-BK500	D501-5500122-BK500	Middle Side Cover Up RH
6					Q273-4216-F31-8.8	Q273-4216-F31-8.8	Screw
7					D501-5500123-BK300	D501-5500123-BK300	Middle Side Cover Down LH
8					D501-5500124-BK300	D501-5500124-BK300	Middle Side Cover Down RH
9					D501-5500125-BK300	D501-5500125-BK300	Footrest Base
10					Q186-0616-F31-8.8	Q186-0616-F31-8.8	Bolt
11					Q273-4212-F31-8.8	Q273-4212-F31-8.8	Screw
12					D501-5500131-BK500	D501-5500131-BK500	Rear Side Cover LH
13					D501-5500132-BK500	D501-5500132-BK500	Rear Side Cover RH
14					D501-5500135-BK300	D501-5500135-BK300	Rear Side Cover Link LH
15					D501-5500136-BK300	D501-5500136-BK300	Rear Side Cover Link RH
16					D501-5500137-BK500	D501-5500137-BK500	Rear Center Cover
17					D501-5500138-BK300	D501-5500138-BK300	Center Cover
18					D501-5500139-BK300	D501-5500139-BK300	Charging Cover
19					D501-5500141-BK300	D501-5500141-BK300	Cap
20					D501-5500142-BK300	D501-5500142-BK300	Holder
21					D501-5500134-BK300	D501-5500134-BK300	Rear Inner Fender
22					D501-5500138-BK300	D501-5500138-BK300	Rear Fender

序号No.				Components and Parts No.	3000W	5000W	Components and Parts Name
4				Red	D501-5500121-RD000	D501-5500121-RD000	Middle Side Cover Up LH
5				Red	D501-5500122-RD000	D501-5500122-RD000	Middle Side Cover Up RH
4				White	D501-5500121-WT000	D501-5500121-WT000	Middle Side Cover Up LH
5				White	D501-5500122-WT000	D501-5500122-WT000	Middle Side Cover Up RH
4				Blue	D501-5500121-BU000	D501-5500121-BU000	Middle Side Cover Up LH
5				Blue	D501-5500122-BU000	D501-5500122-BU000	Middle Side Cover Up RH
4				Grey	D501-5500121-GY000	D501-5500121-GY000	Middle Side Cover Up LH
5				Grey	D501-5500122-GY000	D501-5500122-GY000	Middle Side Cover Up RH
12				Red	D501-5500131-RD000	D501-5500131-RD000	Rear Side Cover LH
13				Red	D501-5500132-RD000	D501-5500132-RD000	Rear Side Cover RH
12				White	D501-5500131-WT000	D501-5500131-WT000	Rear Side Cover LH
13				White	D501-5500132-WT000	D501-5500132-WT000	Rear Side Cover RH
12				Blue	D501-5500131-BU000	D501-5500131-BU000	Rear Side Cover LH
13				Blue	D501-5500132-BU000	D501-5500132-BU000	Rear Side Cover RH
12				Grey	D501-5500131-GY000	D501-5500131-GY000	Rear Side Cover LH
13				Grey	D501-5500132-GY000	D501-5500132-GY000	Rear Side Cover RH
16				Red	D501-5500137-RD000	D501-5500137-RD000	Rear Center Cover
16				White	D501-5500137-WT000	D501-5500137-WT000	Rear Center Cover
16				Blue	D501-5500137-BU000	D501-5500137-BU000	Rear Center Cover
16				Grey	D501-5500137-GY000	D501-5500137-GY000	Rear Center Cover

Marchepied

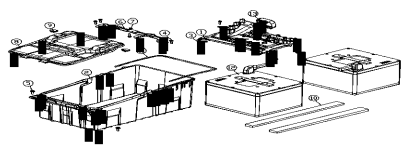


N°				Noms des pièces	Composants des pièces 3R	Composants des pièces 3R5+	Noms des composants
1				Footrest Plastic Set (Ref: D501-5500126-BK300)	D501-5500126-BK300	D501-5500126-BK300	Footrest Plastic
2					D501-5500127-BK300	D501-5500127-BK300	Inner Footrest Plastic
3					Q273-4212-F31-8.8	Q273-4212-F31-8.8	Screw
4					D501-2823000-BK300	D501-2823000-BK300	Limited Bracket
5					Q273-4216-F31-8.8	Q273-4216-F31-8.8	Screw
6					D501-5532001-BK300	D501-5532001-BK300	Rubber
7					Q324-06-F31-8	Q324-06-F31-8	Nut
8					D501-2819000-BK300	D501-2819000-BK300	Hinge
9					Q2148-0608-F31-8.8	Q2148-0608-F31-8.8	Screw
10					D501-2830000-BK300	D501-2830000-BK300	Lock Hook
11					D501-5532002-BK300	D501-5532002-BK300	Rubber Plug Footrest Plastic
12					D501-8245000-BK300	D501-8245000-BK300	Footrest Rubber Cover

Selle et coffre

N°				Noms des pièces	Composants des pièces 3R	Composants des pièces 3R5+	Noms des composants
1					D501-5500128-BK300	D501-5500128-BK300	Helmet Box
2					Q2181-0616-F31-8.8	Q2181-0616-F31-8.8	Bolt
3					D501-7211000-BK300	D501-7211000-BK300	Seat Comp.
4					D501-7212000-BK300	D501-7212000-BK300	Bracket
5					Q273-4216-F31-8.8	Q273-4216-F31-8.8	Screw

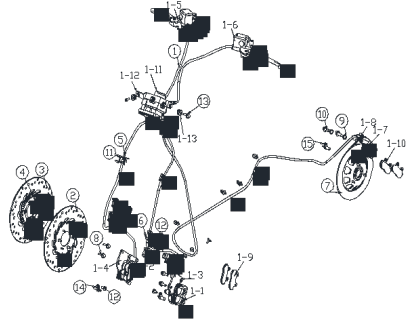
Compartment batterie



N°				Noms des pièces	Composants des pièces 3R	Composants des pièces 3R5+	Noms des composants
1					D501-5539000-BK300	D501-5539000-BK300	Battery Rear Cover
2					D501-5541000-BK300	D501-5541000-BK300	Battery Box New version - After 30Sept2022, 5000W Only
2-1					D501-5541000-BK300	D501-5541000-BK300	Battery Box Old version - Before 30Sept2022.
3					Q320-05-F31-8	Q320-05-F31-8	Nut

4					Q214-0515-F31-8.8	Q214-0515-F31-8.8	Screw
5					Q2181-0616-F31-8.8	Q2181-0616-F31-8.8	Screw
6					D501-2814000-BK300	D501-2814000-BK300	Battery Box Lock Plate
7					Q330-08-F31-8	Q330-08-F31-8	Nut
8					D501-5543000-BK300	D501-5543000-BK300	Bracket Box Front Cover
9					D501-5532008-BK300	D501-5532008-BK300	Rubber Plug
10					D501-5545000-BK300	D501-5545000-BK300	Battery Separator
11					D501-5532009-BK300	D501-5532009-BK300	Slider Seal Rubber Tube
12					D501-2101110	D501-2101110	Battery 60V40AH 3rd generation - After Sept2022. Deferring status. High aluminum barrel with high plug (H: 16cm)
12-1					D501-2101120	D501-2101120	Battery 60V40AH 2nd generation - Before Sept2022. Deferring status. Low aluminum barrel with high plug (H: 16cm)
12-2					D501-2101140	D501-2101140	Battery 60V40AH 1st generation - Before June2021. Ling-Bo status. Low aluminum barrel (H: 14cm)
13					D501-5532004-BK300	D501-5532004-BK300	Cable Rubber Plug

Système de freinage



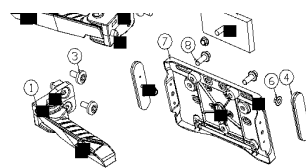
N°				Noms des pièces	Composants des pièces 3R	Composants des pièces 3RS+	Noms des composants
1				Brake Comp. Set (Ref: D501-3500100-00)	D501-3500200-00	D501-3500100-00	Brake Comp.
1-1					D501-3501100-BK300	D501-3501100-BK300	Brake Caliper LF
1-2					D501-3501200-BK300	D501-3501200-BK300	Brake Caliper RF
1-3					D501-3501103-BK300	D501-3501103-BK300	Bracket LF
1-4					D501-3501203-BK300	D501-3501203-BK300	Bracket RF
1-5					D501-3505100-BK300	D501-3505100-BK300	Front Brake Pump
1-6					D501-3505200-BK300	D501-3505200-BK300	Rear Brake Pump
1-7						D501-3502000-BK300	Brake Caliper Rear
1-8					D501-3502103-BK300	D501-3502103-BK300	Bracket Rear
1-9					D501-3501102-00	D501-3501102-00	Brake Shoes Front
1-10					D501-3502102-00	D501-3502102-00	Brake Shoes Rear
1-11					D501-3571000-00 (cass)	D501-3550000-00	Abs Pump (5000w) Cps (Black 32000W)
1-12						D501-3550100-BK300	Bracket ABS
1-13						D501-3561105-00	Rubber Bush (ABS)
2					D501-3501300-00	D501-3501300-00	Brake Disc FL
3					D501-3501400-00	D501-3501400-00	Brake Disc FR
4					FR02180-0820-F31-8.8	FR02180-0820-F31-8.8	Bolt
5					D501-3561103-F3200	D501-3561103-F3200	Clip Up
6					D501-3561104-F3100	D501-3561104-F3100	Clip Down
7					D501-3502300-00	D501-3502300-00	Brake Disc R
8					Q184-0820-F31-8.8	Q184-0820-F31-8.8	Bolt
9					Q403-08-F31	Q403-08-F31	Spring Washer
10					Q184-0816-F31-8.8	Q184-0816-F31-8.8	Bolt
11					Q186-0610-F31-8.8	Q186-0610-F31-8.8	Bolt
12					Q2181-0616-F31-8.8	Q2181-0616-F31-8.8	Bolt
13					Q186-0630-F31-8.8	Q186-0630-F31-8.8	Bolt
14						D501-3802100-00	Sensor
15						D501-3802200-00	Sensor

Serrure

N°				Noms des pièces	Composants des pièces 3R	Composants des pièces 3RS+	Noms des composants
1					D501-5004200-00	D501-5004200-00	Lock Comp. New version - After 01Jan2023. 60V Main host
1-1					D501-5004100-00	D501-5004100-00	Lock Comp. Old version - Before 01Jan2023. 12V Small host
2					D501-5004103-BK300	D501-5004103-BK300	Pin Plate
3					D501-5004102-SL000	D501-5004102-SL000	Base 1
4					D501-5004101-SL000	D501-5004101-SL000	Base 2
5					Q2188-0616-F31-8.8	Q2188-0616-F31-8.8	Bolt
6					Q403-06-F31	Q403-06-F31	Spring Washer
7					Q2188-0850-F30-8.8	Q2188-0850-F30-8.8	Screw
8					Q330-08-F31-8	Q330-08-F31-8	Nut
9					Q214C-0512-F31-8.8	Q214C-0512-F31-8.8	Screw
10					Q320-05-F31-8	Q320-05-F31-8	Nut
11					Q402-06-F31	Q402-06-F31	Washer
12					D501-5004200-00	D501-5004200-00	Battery Box Lock Comp.
13					D501-5004300-00	D501-5004300-00	Seat Lock Comp.
14					Q2148-0608-F31-8.8	Q2148-0608-F31-8.8	Screw
15					D501-8701000-00	D501-8701000-00	Cable Seat Lock
16					D501-8702000-00	D501-8702000-00	Cable, Battery Box Lock

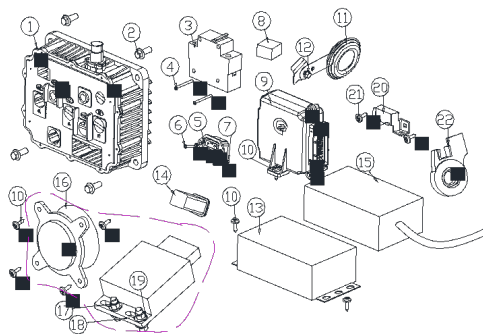
Reposes pieds





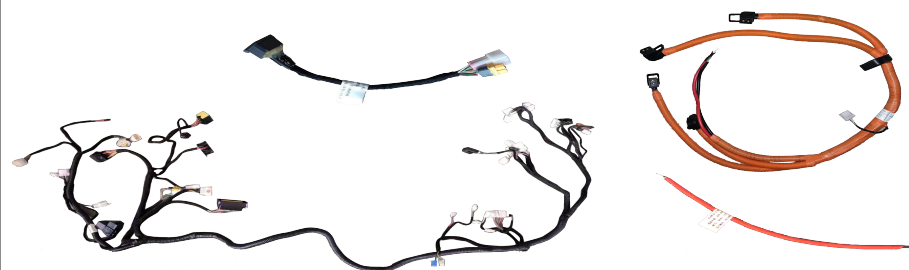
N°				Noms des pièces	Composants des pièces 3R	Composants des pièces 3RS+	Noms des composants
1					D501-8243000-SL000	D501-8243000-SL000	Rear Footrest LH
2					D501-8244000-SL000	D501-8244000-SL000	Rear Footrest RH
3					Q1508-1025-F31-8.8	Q1508-1025-F31-8.8	Bolt
4					D501-4135100-00	D501-4135100-00	Side Reflector
5					D501-4135200-00	D501-4135200-00	Rear Reflector
6					Q130-06-F31-8	Q130-06-F31-8	Nut
7					D501-5544000-BE300	D501-5544000-BE300	License Plate Base
8					Q186-0616-F31-8.8	Q186-0616-F31-8.8	Bolt

Système électrique



N°				Noms des pièces	Composants des pièces 3R	Composants des pièces 3RS+	Noms des composants
1					D501-2142110	D501-2142120-40	Controller Comp. New version - After June2021, Doferng status
1-1				D501-78120	D501-2142110	D501-2142120	Controller Comp. Old version - Before June2021, Ling-Bo status
2					Q184-0835-F31-10.9	Q184-0835-F31-10.9	Bolt
3					D501-3736000-00	D501-3736000-00	Power Off Switch
4					Q214-0335-F31-8.8	Q214-0335-F31-8.8	Screw
5				D501-78410	D501-2126201-00	D501-2126201	Charging Port New version - After June2021, Doferng status
5-1					D501-4021200	D501-4021200	Charging Port Old version - Before June2021, Ling-Bo status
6					Q254-0310-F31-8.8	Q254-0310-F31-8.8	Screw
7					Q340B-03-F31-8	Q340B-03-F31-8	Nut
8					D501-3766000-00	D501-3766000-00	Flasher
9					D501-3636110	D501-3636110	EBS Central Control Assembly
10					Q273-4816-F31-8.8	Q273-4816-F31-8.8	Screw
11					D501-3721000-00	D501-3721000-00	Horn
12					Q186-0610-F31-8.8	Q186-0610-F31-8.8	Bolt
13					D501-2122110	D501-2122120	DC-DC New version - After June2021 Doferng status Non isolation
13-1					D501-2122110	D501-2122110	DC-DC Old version - Before June2021 Ling-Bo status Isolation
14					D501-3793000-00	D501-3793000-00	Ush Port
15					D501-2107130-EU	D501-2107130-EU	Charger New version (3rd generation) - After June2021 Doferng status
					D501-2107120-EU	D501-2107120-EU	Charger New version (2nd generation) - After June2021 Doferng status
15-1					D501-2107110-EU	D501-2107110-EU	Charger New version (1st generation) - Before June2021 Ling-Bo status
16					D501-7911100-00	D501-7911100-00	Bluetooth Horn
17					Q214C-0512-F31-8.8	Q214C-0512-F31-8.8	Screw
18					Q130-05-F31-8	Q130-05-F31-8	Nut
19					Q402-06-F31	Q402-06-F31	Washer
20					D501-2138100-00	D501-2138100	Diagnostic Port New version - After June2021 ABS status
20-1					D501-2138110	D501-2138110	Diagnostic Port Old version - Before June2021 Normal status
21					Q273-4212-F31-8.8	Q273-4212-F31-8.8	Screw
22					D501-3794000-00	D501-3794000-00	Choke Switch, Side Stand

Cablage



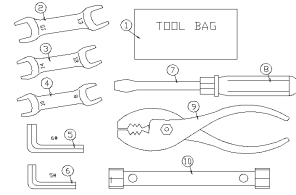
N°				Noms des pièces	Composants des pièces 3R	Composants des pièces 3RS+	Noms des composants
1					D501-4002130	D501-4002100 D501-4002300-A D501-4002400	Main Cable Main Cable Main Cable
2					D501-2126200-00	D501-2126140-8	Charging Cable New version - After June2021
2-1					D501-2126200-00	D501-2126140	Charging Cable Old version - Before June 2021
3					D501-4021110-8	D501-4021110-A	Battery Cable Old version - Before June 2021
3-1					D501-4021110-8	D501-4021110-8	Battery Cable New version - After June2021

4						D501-4021150-B	D501-4021150-8	Controller Cable A
---	--	--	--	--	--	----------------	----------------	--------------------

Logo / Autocollants

N°	Noms des pièces	Composants des pièces 3R	Composants des pièces 3RS+	Noms des composants
1		D501-880100-00000	D501-880100-00000	Plastic Sticker
2		D501-8802000-00000	D501-8802000-00000	Logo Cover
3		D501-8801000-00000	D501-8801000-00000	Front Wheel Cover Logo
4		D501-8803000-00000	D501-8803000-00000	Rear Handling Logo
5		D501-8804100-00000	D501-8804000-00000	Manufacture Plate

Boîte à outils



N°	Noms des pièces	Composants des pièces 3R	Composants des pièces 3RS+	Noms des composants
1		TY00-3919100-00	TY00-3919100-00	Tool Bag
2		TY00-39271513	TY00-39271513	Fork Spanner 13#-15#
3		TY00-39271412	TY00-39271412	Fork Spanner 14#-12#
4		TY00-39271008	TY00-39271008	Fork Spanner 10#-8#
5		TY00-392806	TY00-392806	Allen Wrench 6#
6		TY00-392805	TY00-392805	Allen Wrench 5#
7		TY00-392902	TY00-392902	Stewdriver
8		TY00-392902	TY00-392902	Stewdriver Handlebar
9		TY00-393100	TY00-393100	Pier
10		TY00-39321513	TY00-39321513	Sleeve 15#-13#